



JOINT BASE ANDREWS

Mid-Air Collision Avoidance Program

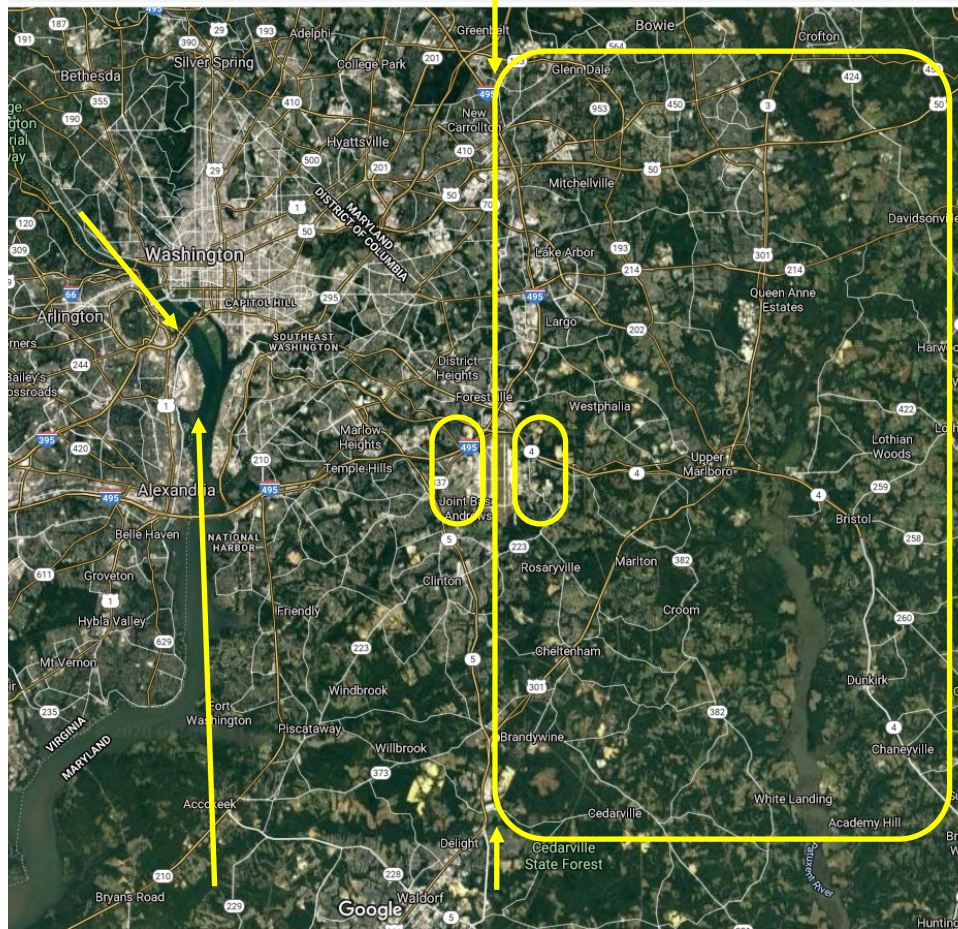
Contact 113Wing Safety at: usaf.dc.113-wg.list.113wg-safety@mail.mil

Andrews Traffic Pattern

The Andrews flying community is happy to share the Baltimore-Washington Metropolitan Area airspace with our civilian and government colleagues. By understanding the needs of the varied users, we can all contribute to safer operations. Above all, continue to clear your flight path.

Joint Base Andrews is the home of the 316th Wing, 89th Airlift Wing, 113th Wing, the 459th Air Refueling Wing, Marine Transport Squadron Andrews, Naval Commander Fleet Logistics Support Wing, and a detachment of the Maryland State Police Aviation Command. These organizations operate over 75 aircraft of twelve different types, including several different business jets, airliners, tankers, fighters, and helicopters. Andrews sees over 5000 landings and departures each month, including a steady flow of transient cargo and passenger aircraft.

The primary visual traffic pattern is within 2 miles of the airfield and up to 2000' MSL, but the radar pattern can extend 10-15 NM north and south of the airfield, 10 NM to the East, and up to 3000' MSL. Numerous arrival and departure corridors also cross this airspace, feeding traffic into Reagan National, BWI, and Dulles airports. Potomac Approach controls the Class B airspace that envelops all of these airfields.



Remember: the Baltimore-Washington Metropolitan Area is under the Special Flight Rule Area (SFRA) and the DC Flight Restricted Zone (FRZ) (codified under FAR 91.161)

If you are intercepted by a U.S. Military or law enforcement aircraft, immediately:

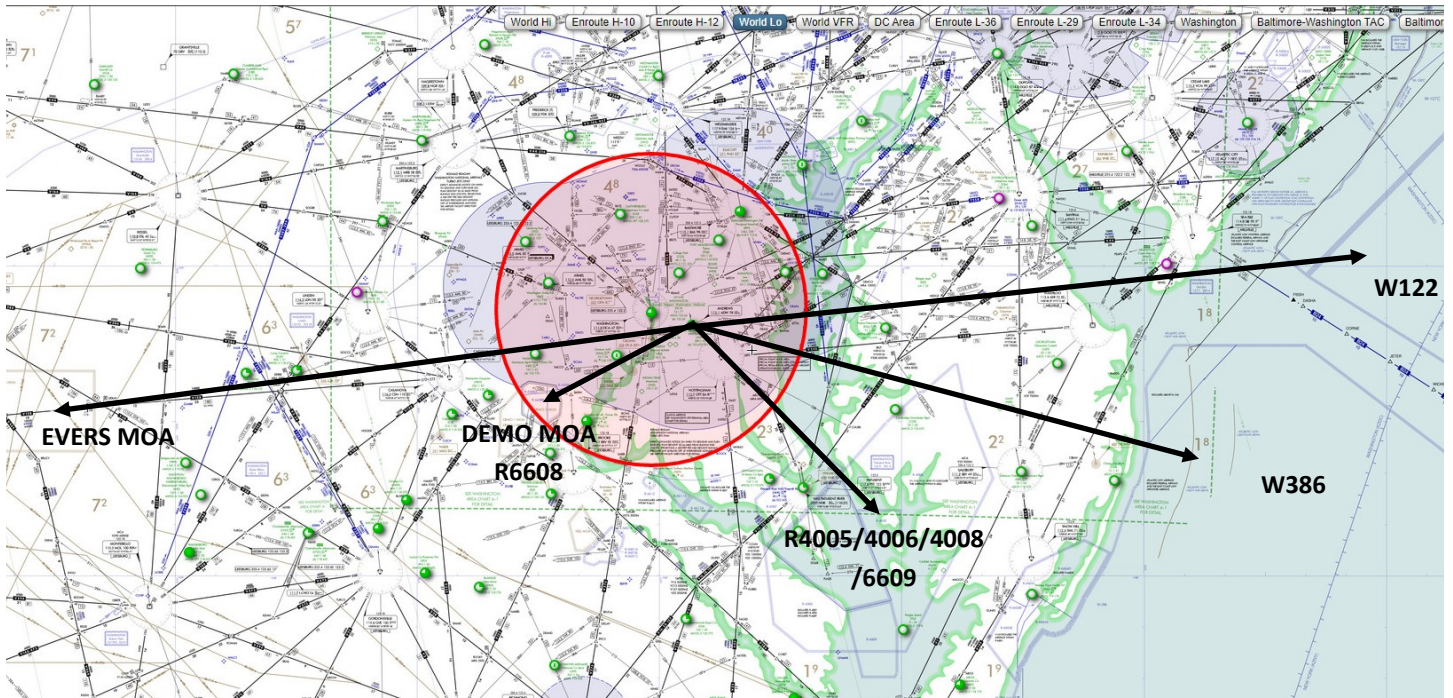
- Follow the instructions given by the intercepting aircraft, and notify ATC, if possible.
- Attempt to communicate with the intercepting aircraft and/or ATC on the emergency frequency 121.5 MHz, giving the identity and position of your aircraft and the nature of the flight.
- If equipped with a transponder, squawk 7700, unless otherwise instructed by ATC. If any instructions received by radio from any sources conflict with those given by the intercepting aircraft by visual or radio signals, request clarification while continuing to comply with the instructions given by the intercepting aircraft.

Intercept Signals

- Intercepting aircraft rocks wings and begins a slow turn - You have been intercepted, follow me.
- Intercepting aircraft performs an abrupt maneuver away from intercepted aircraft - You are cleared to proceed.
- Intercepting aircraft circles an airport, lowers it's gear and flies an approach to the runway - You are to land at this airport.
- INTERCEPTED AIRCRAFT: ACKNOWLEDGE WITH A WING ROCK AND FOLLOW THE INTERCEPTING AIRCRAFT OR CONTINUE AS APPROPRIATE.

Local Tactical Training Areas

Expect departures to initially climb to 3000' MSL, stair-stepping higher, and return at 2000-4000' MSL.



Local Helicopter Routes

Expect traffic from 100-1500' AGL along these corridors.

